



GAT MONTHLY MEMBERSHIP PROGRESS REPORT

Results as of: 3/31/2022

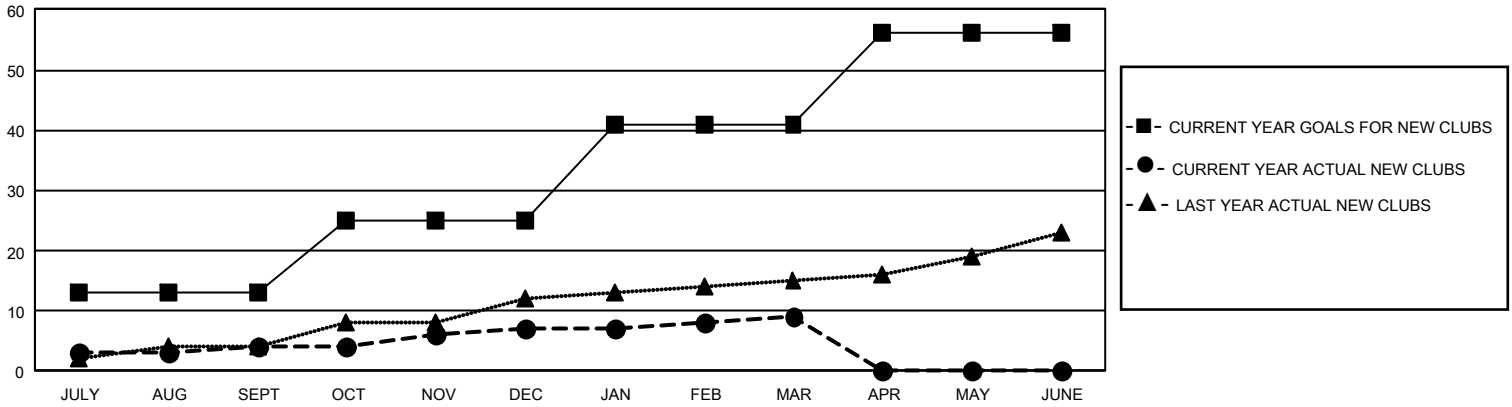
GMT Constitutional Area 1, Group B

REPORT DOES NOT INCLUDE CLUBS IN UNDISTRICTED AREAS.

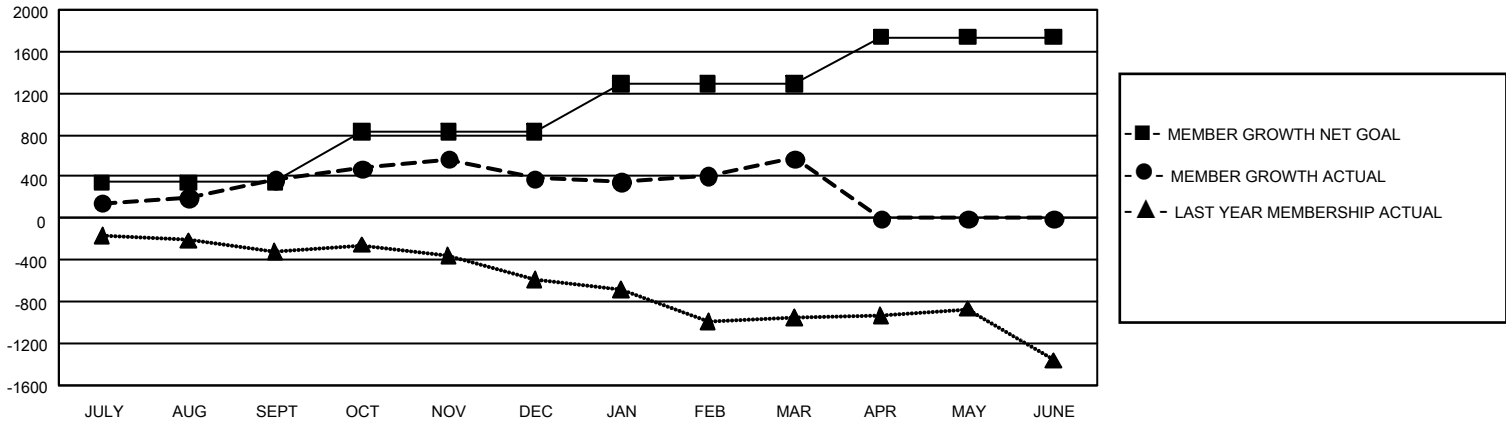
Clubs			
RESULTS FOR 2021-2022			
QUARTER	NEW CLUB GOAL	NEW CLUBS	DROPPED CLUBS
JULY/AUG/SEPT	39	4	16
OCT/NOV/DEC	36	3	14
JAN/FEB/MAR	48	2	9
APR/MAY/JUNE	45	0	0

Members			
RESULTS FOR 2021-2022			
QUARTER	MEMBER GROWTH NET GOAL	MEMBER GROWTH ACTUAL	DROPPED MEMBERS ACTUAL (including transfers)
JULY/AUG/SEPT	345	1,471	917
OCT/NOV/DEC	482	973	881
JAN/FEB/MAR	460	1,037	721
APR/MAY/JUNE	452	0	0

GOALS AND ACTUAL NEW CLUBS CUMULATIVE



GOALS AND ACTUAL MEMBERS CUMULATIVE



DROPPED CLUBS: 39	515 CLUBS OF 932 ADDED 1 OR MORE NEW MEMBERS	<u>GENDER DISTRIBUTION</u>	
		MALE 14,076 (58.25%) FEMALE 10,080 (41.72%) NON BINARY 1 (0.00%) PREFER NOT TO ANSWER 6 (0.02%)	
<u>DROPPED MEMBERS</u>		CLICK HERE FOR CUMULATIVE MEMBERSHIP DATA	TOTAL FAMILY UNIT MEMBERS 4,741
DECEASED 266 CLUB CANCELLED 186 OTHER 2,068 TOTAL 2,520			FAMILY MEMBERS PAYING HALF DUES 2,490